

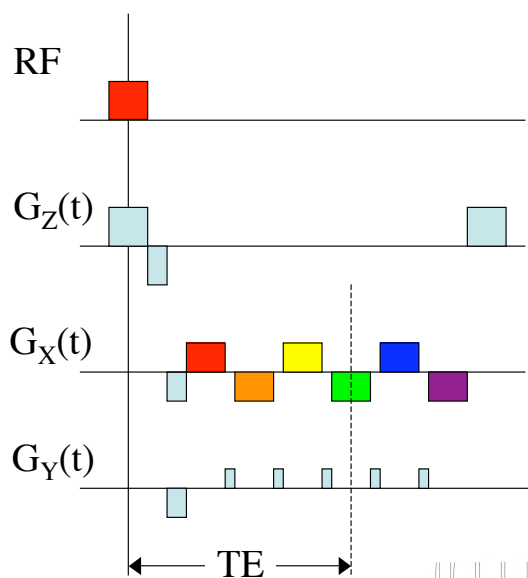
Bioengineering 208 Magnetic Resonance Imaging

Winter 2007
Lecture 4

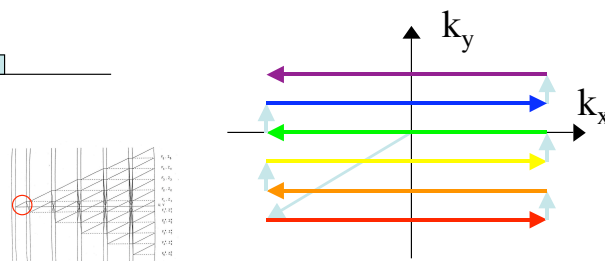
- Echoplanar Imaging
 - Pulse Sequence
 - Nyquist Ghosts
 - Off-Resonance Effects
 - T_2^* Blurring

E. Wong, BE208, UCSD Winter 2007

Echoplanar imaging sequence

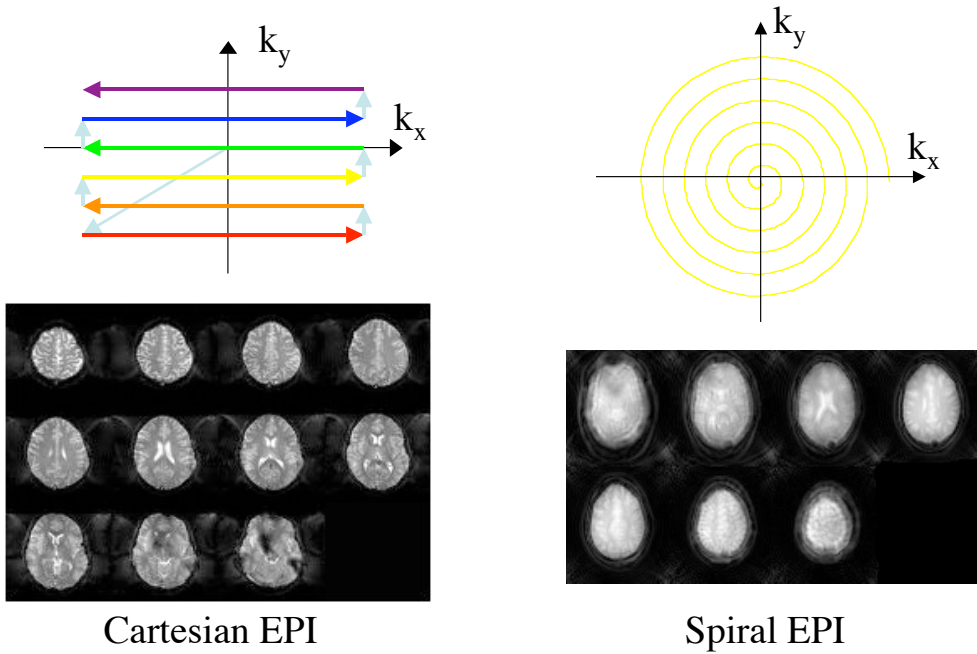


- Multiple lines of K-space with one excitation
- Allows for “snapshot” imaging
- K-space coverage limited by gradient hardware and T_2^*
- Main Applications:
 - BOLD fMRI
 - Diffusion
 - Freezing motion



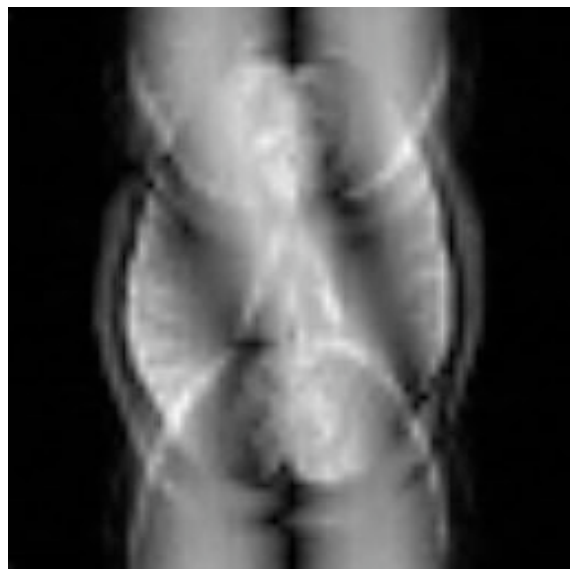
E. Wong, BE208, UCSD Winter 2007

The EPI Family



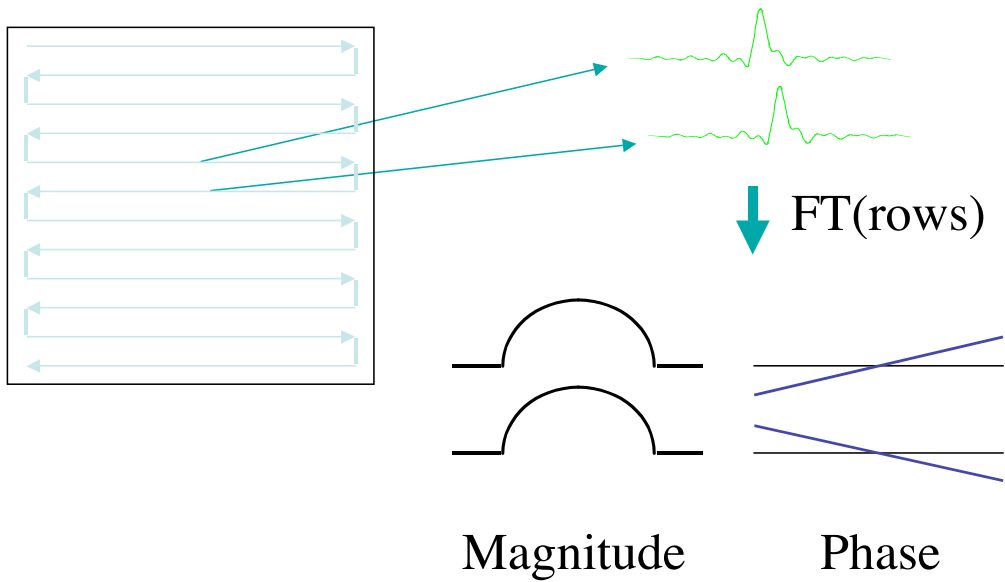
E. Wong, BE208, UCSD Winter 2007

NYQUIST GHOST



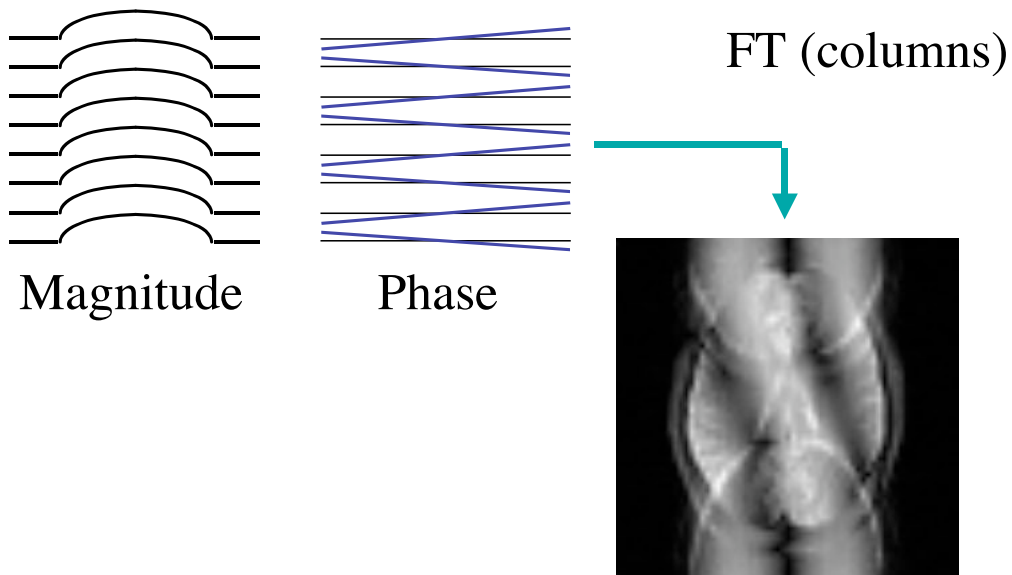
E. Wong, BE208, UCSD Winter 2007

NYQUIST GHOST



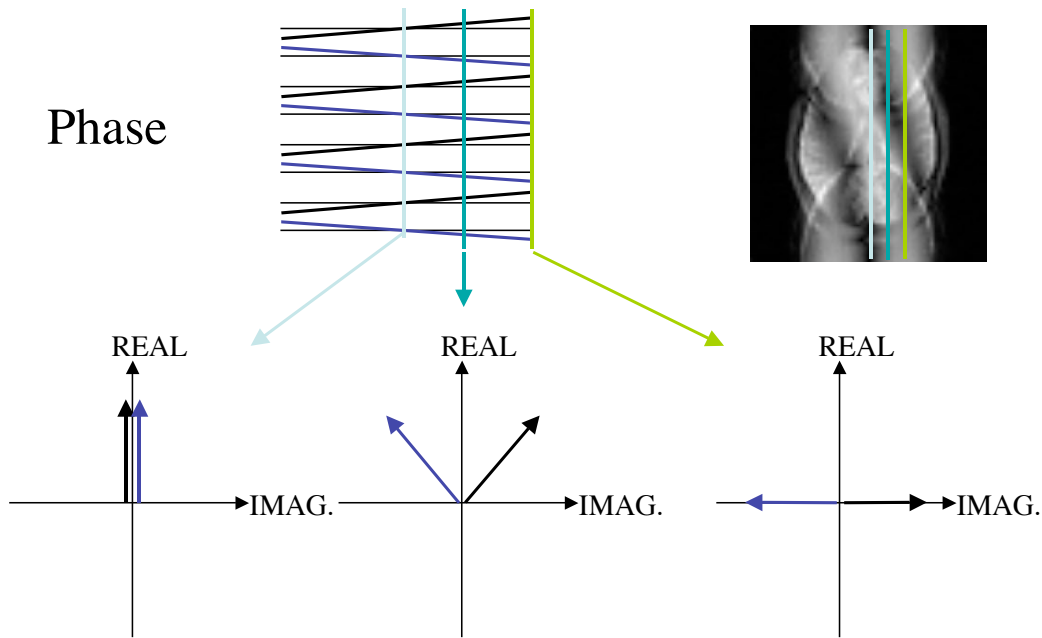
E. Wong, BE208, UCSD Winter 2007

NYQUIST GHOST



E. Wong, BE208, UCSD Winter 2007

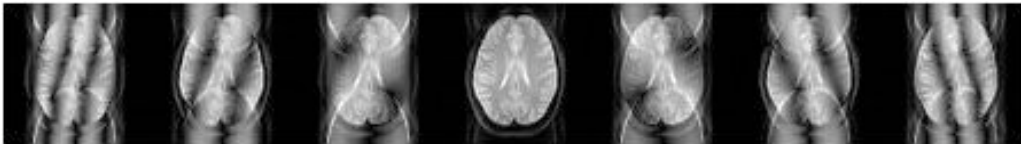
NYQUIST GHOST



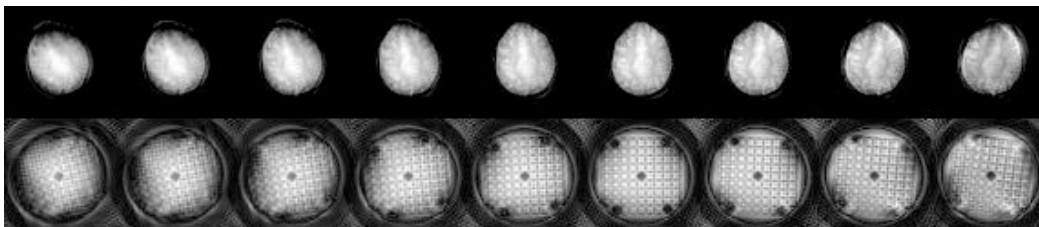
E. Wong, BE208, UCSD Winter 2007

TIMING ERRORS

EPI

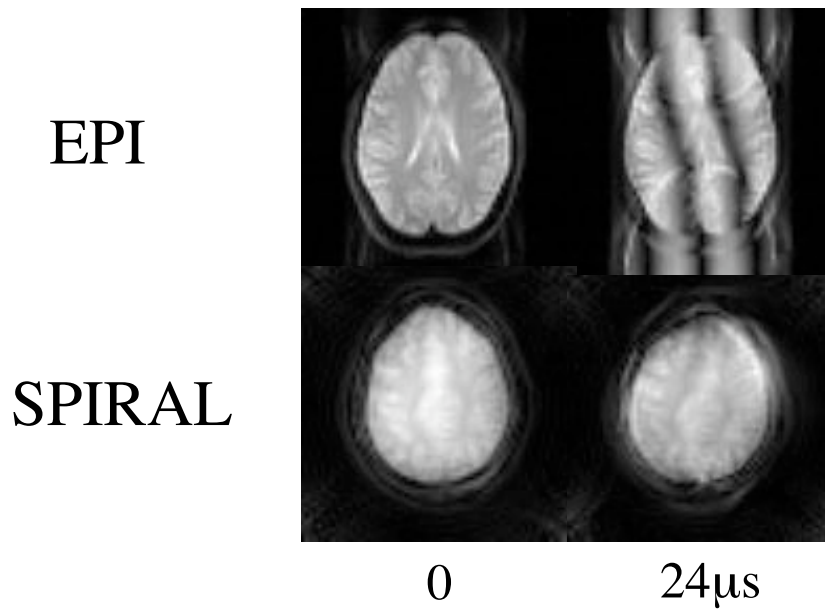


SPIRAL



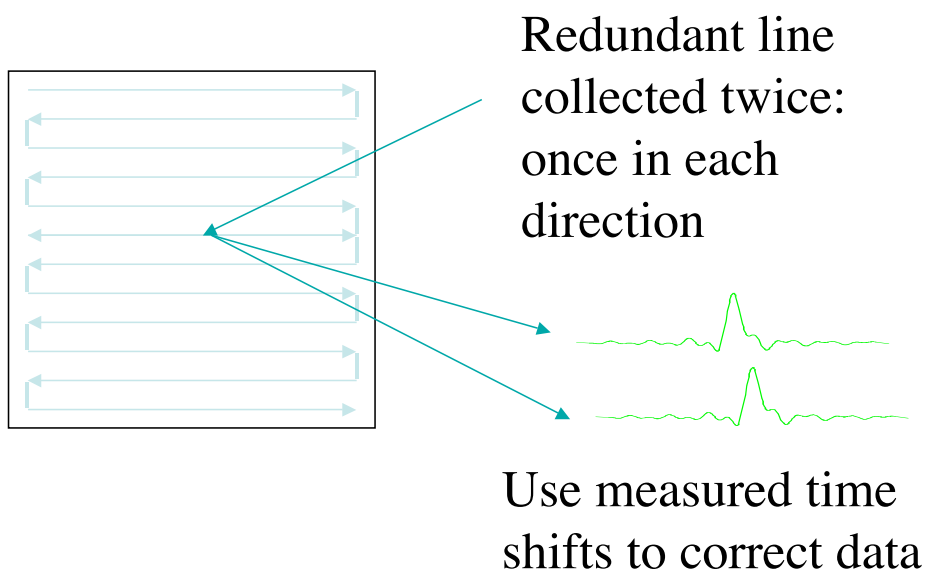
E. Wong, BE208, UCSD Winter 2007

TIMING ERRORS



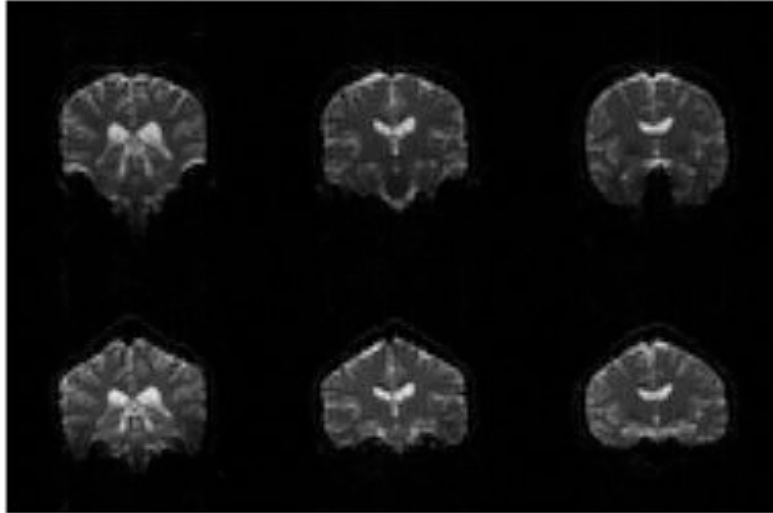
E. Wong, BE208, UCSD Winter 2007

SKIP a BLIP (or two)



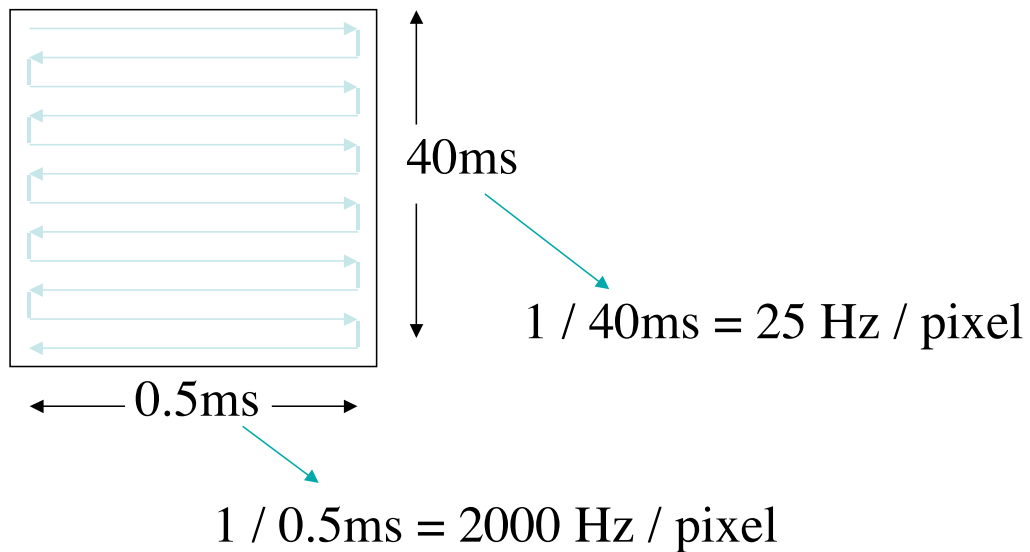
E. Wong, BE208, UCSD Winter 2007

SPATIAL DISTORTION



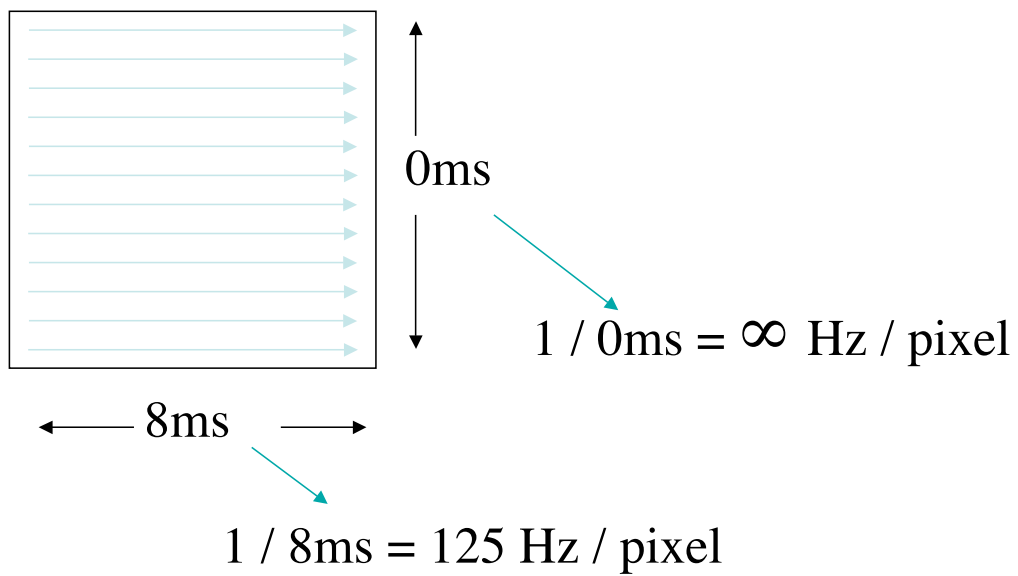
E. Wong, BE208, UCSD Winter 2007

Off Resonance Behavior : EPI



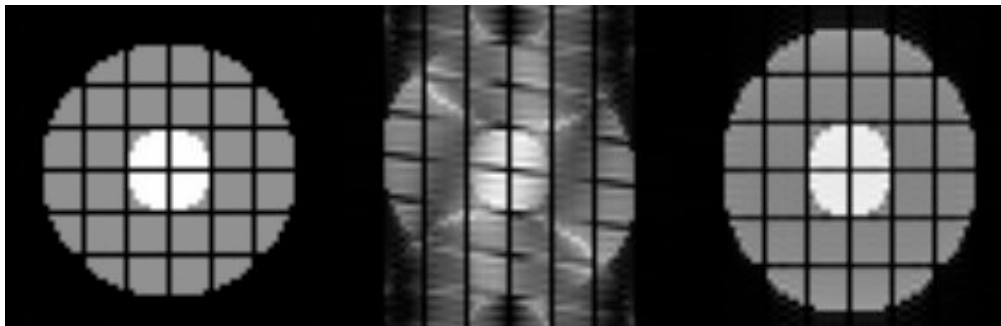
E. Wong, BE208, UCSD Winter 2007

CONVENTIONAL IMAGING



E. Wong, BE208, UCSD Winter 2007

SHIM PATTERNS



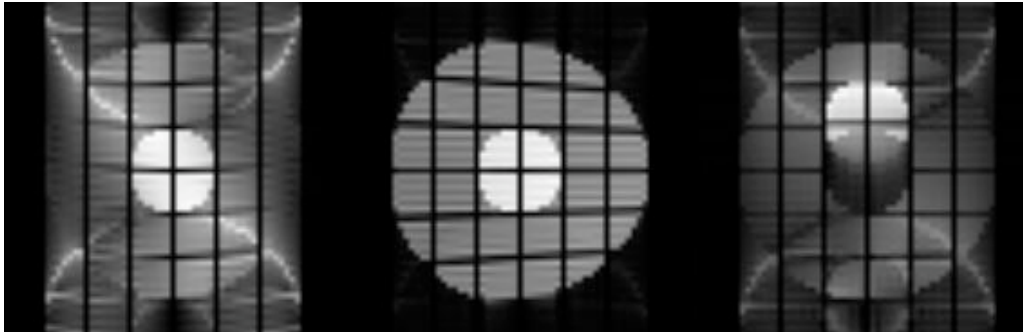
PERFECT SHIM

X

Y

E. Wong, BE208, UCSD Winter 2007

SHIM PATTERNS



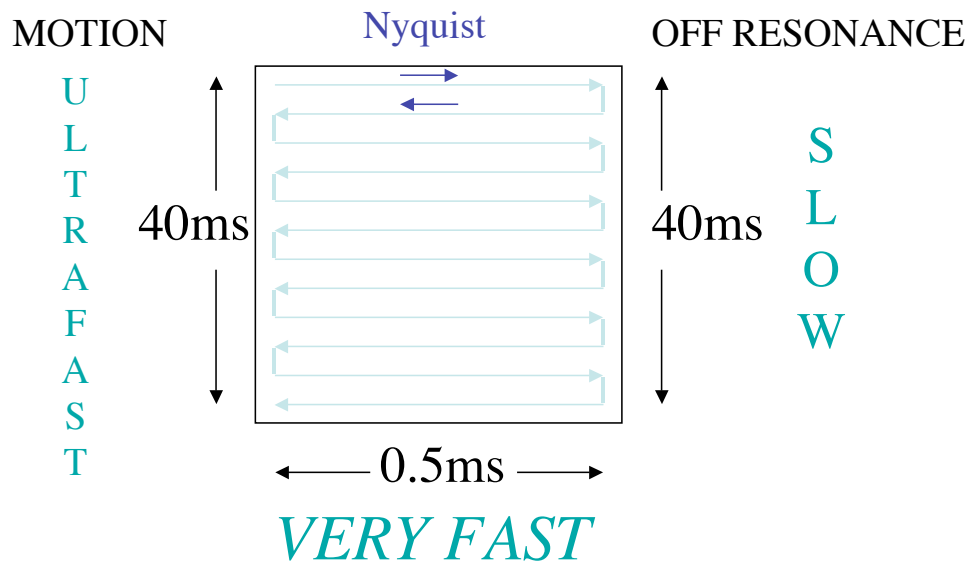
X^2

$X Y$

FAT

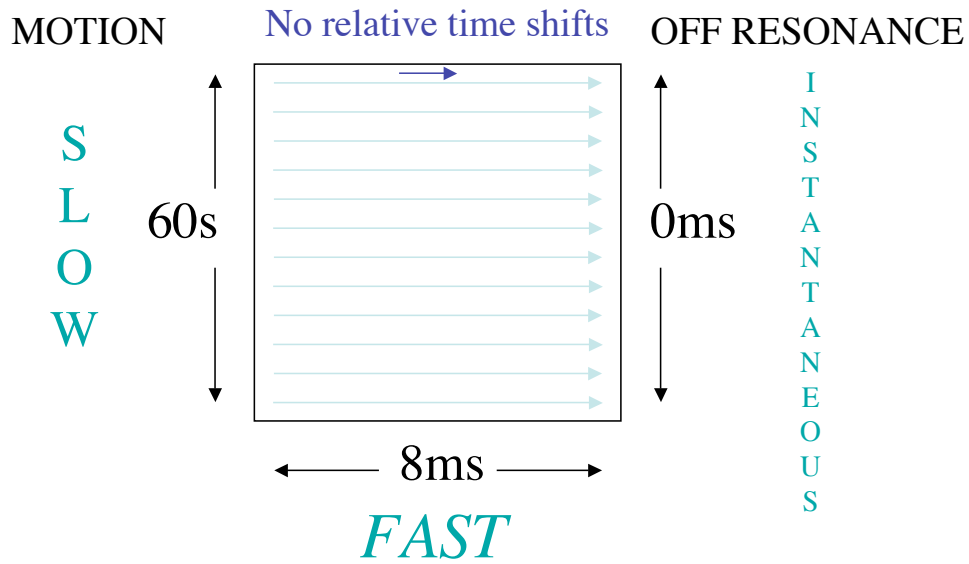
E. Wong, BE208, UCSD Winter 2007

EPI



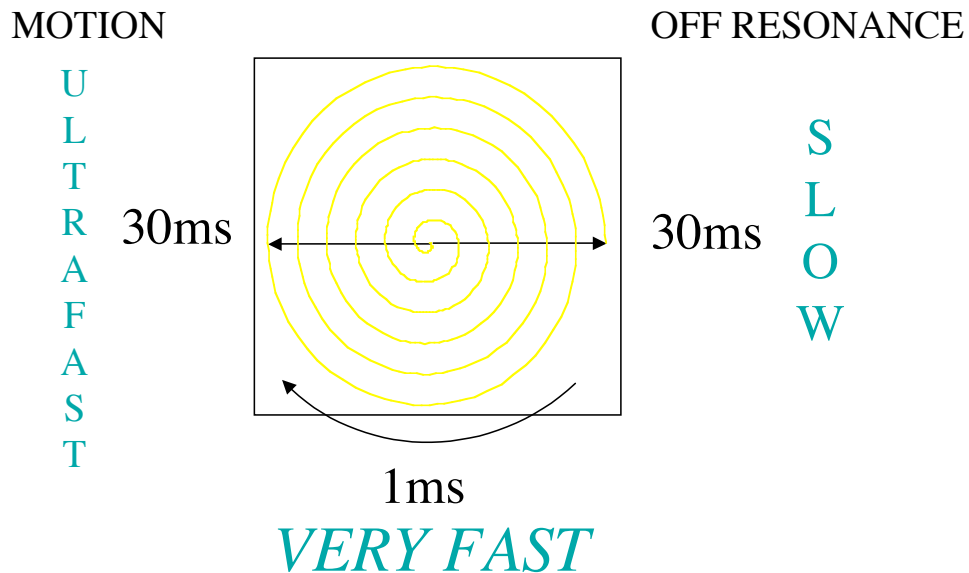
E. Wong, BE208, UCSD Winter 2007

CONVENTIONAL IMAGING



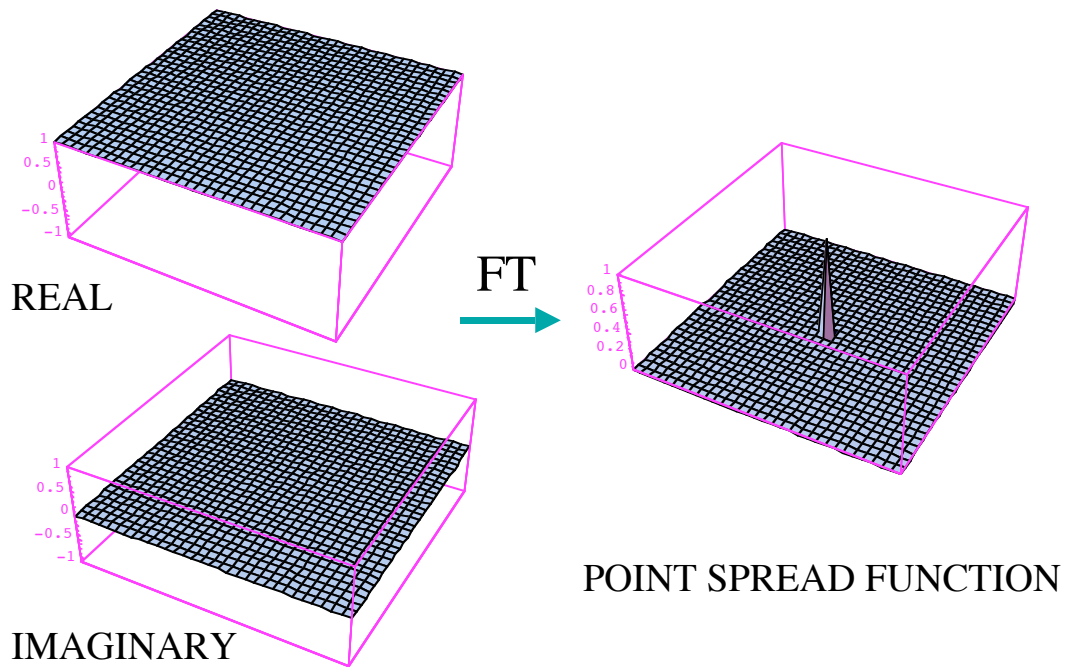
E. Wong, BE208, UCSD Winter 2007

SPIRAL



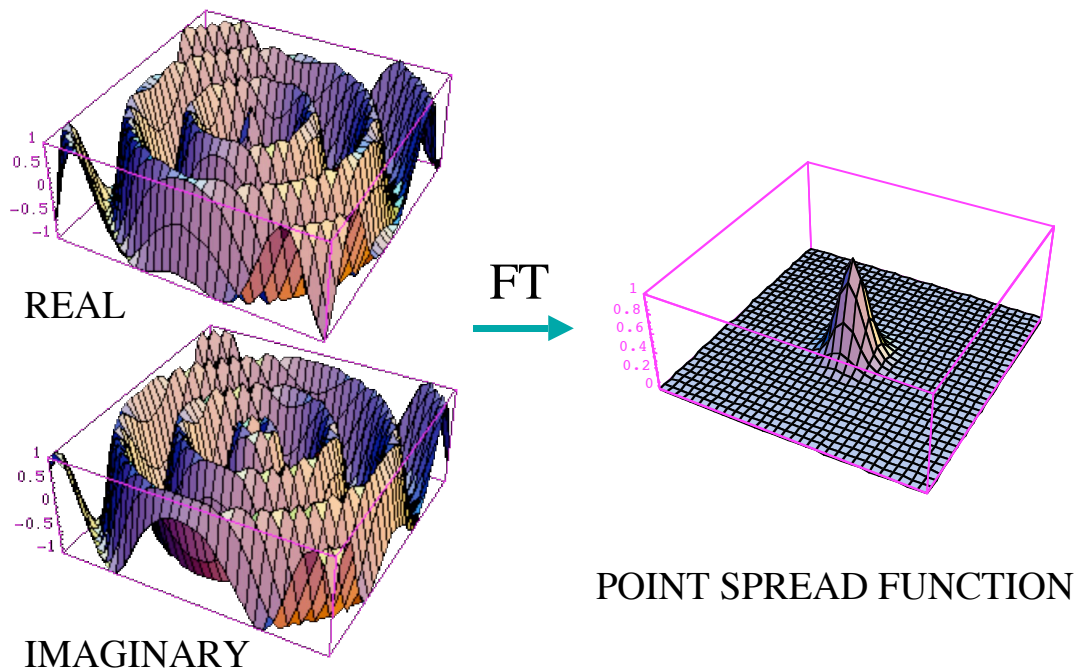
E. Wong, BE208, UCSD Winter 2007

SPIRAL PSF (on resonance)



E. Wong, BE208, UCSD Winter 2007

SPIRAL PSF (off resonance)



E. Wong, BE208, UCSD Winter 2007

SUMMARY

- Nyquist ghosts
 - Unique to EPI
 - Primarily caused by timing errors
 - Secondarily by off resonance effects
 - Pretty fixable
- Equivalent timing errors in Spiral cause rotation/blurring
 - Also fixable

E. Wong, BE208, UCSD Winter 2007

SUMMARY

- Image distortion
 - Primarily caused by off resonance effects
 - Same as regular chemical shift artifact, but exaggerated
 - Pretty fixable
- Equivalent effects in Spiral cause blurring, and is harder to fix

E. Wong, BE208, UCSD Winter 2007

SUMMARY

- Signal dropout is due to TE, slice thickness, SE vs GE as in conventional imaging
- EPI is unusually sensitive to scanner instability because of:
 - High sensitivity to off resonance effects
 - High SNR from low resolution